

# UNSHIELDED SMD POWER INDUCTORS / FPI TYPE

## FEATURES

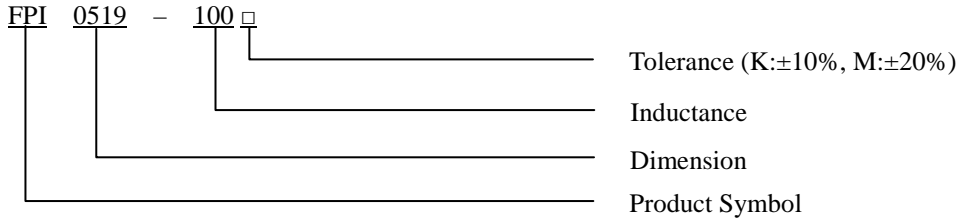
- ◆ Silver Plated Type
- ◆ High power and high saturation
- ◆ Ideal inductors for DC/DC conversion



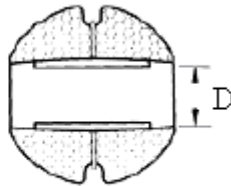
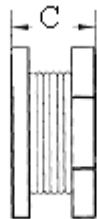
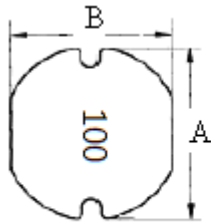
## APPLICATIONS

- ◆ Power supply for VTRs.
- ◆ Portable communication equipment.
- ◆ Notebook PCs.
- ◆ LCD televisions.
- ◆ DC/DC converters, etc.

## ORDERING CODE



## DIMENSIONS (UNIT: mm)



|   |               |     |
|---|---------------|-----|
| A | $5.8 \pm 0.3$ | m/m |
| B | $5.2 \pm 0.3$ | m/m |
| C | $2.1 \pm 0.3$ | m/m |
| D | 1.3 (REF)     | m/m |

## UNSHIELDED SMD POWER INDUCTORS / FPI TYPE

### ELECTRICAL CHARACTERISTICS FOR FPI0519

| Part No.      | Inductance (uH) | RDC ( $\Omega$ ) | IDC (A) |
|---------------|-----------------|------------------|---------|
| FPI0519-1R0 □ | 1.0             | 0.035            | 5.70    |
| FPI0519-2R2 □ | 2.2             | 0.062            | 4.20    |
| FPI0519-3R9 □ | 3.9             | 0.073            | 3.30    |
| FPI0519-4R7 □ | 4.7             | 0.080            | 2.50    |
| FPI0519-6R8 □ | 6.8             | 0.160            | 2.40    |
| FPI0519-100 □ | 10              | 0.180            | 1.80    |
| FPI0519-220 □ | 22              | 0.450            | 1.20    |
| FPI0519-470 □ | 47              | 0.750            | 0.80    |
| FPI0519-560 □ | 56              | 0.800            | 0.60    |
| FPI0519-680 □ | 68              | 1.150            | 0.55    |
| FPI0519-101 □ | 100             | 1.500            | 0.50    |
| FPI0519-151 □ | 150             | 2.000            | 0.45    |
| FPI0519-181 □ | 180             | 2.500            | 0.40    |

\* 100uH 以上 Test Frequency : 1KHZ/1V

\* 100uH 以下 Test Frequency : 2.52MHZ/1V